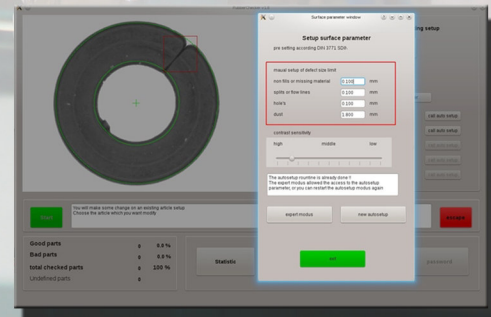
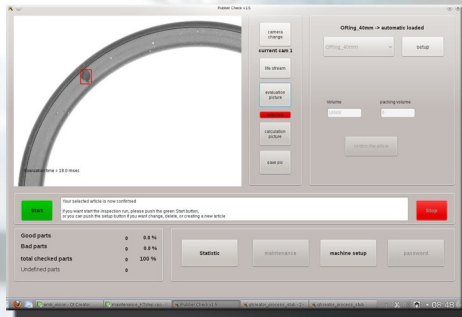
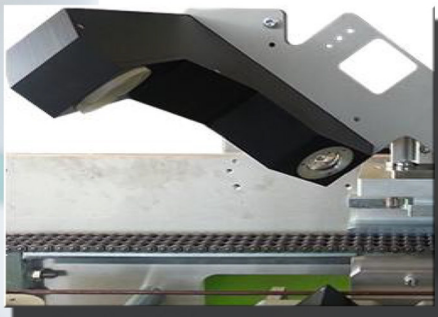
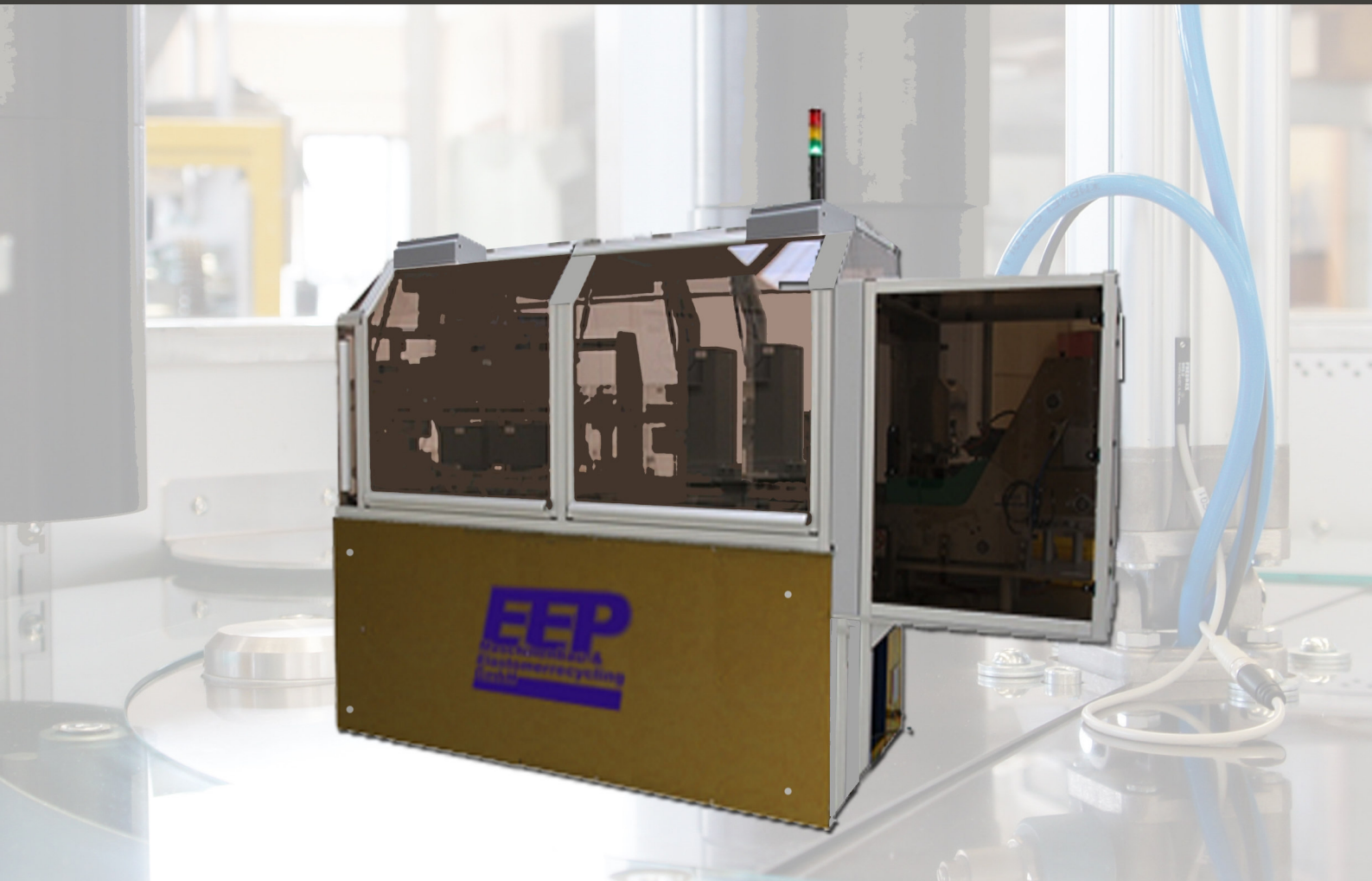


KTline



EEP
Maschinenbau &
Elastomerrecycling
GmbH



KT Vision Systems

www.eep-maschinenbau.de

KTline

Product Information

The KTline is especially designed for unstable or soft sealing parts.

In particular, the KTline is suitable for cutted hose rings with a diameter up to 120 mm OD.

The hose rings are checked double-sided, as well as the inner and outer side, for typical surface defects.

They are e.g.:

- Cutting errors on the edges
- Cracks created by sliced bubbles
- Non fills, flow lines, burned material, visible on the whole surface

A half transparent feeder belt with forced-turnaround serves here as carrier.



The big advantage against a double glass-plate inspection system is that this type of machine has only one transition point. After transferring the unstable part from the feeding and separation unit to the first belt, the part still remains in the same conveyor until blown off in accordance with the inspection result.

With high-resolution cameras both sides of the part and in addition the inner and outer surface are inspected by special sensor units. A set of sensors checks on the first belt one side of the parts, and a second set checks after the forced turn-around the other side.

In addition to the surface sensors a measuring station is optional available, able to measure ID, CS and height on one point.

Technical data KTline:

■ Dimension (l/w/h)	approx. 4 m x 1,8 m x 2 m
■ Connection values:	220V 2 KW min. 4,5 at compressed air
■ HMI operating system:	Linux
■ HMI visualisation:	Flat panel 14" touchscreen
■ External LAN network:	GigE Interface DHCP or static

Defect size:

■ Camera resolution	0,025 mm
■ Surface defects	min 0,25 mm x 0,25 mm and min depth 0,2 mm
■ Split on the top or bottom side	min. 0,1 mm x 0,5 mm min. visible > 25 gray scale contrast

Measurement station:

■ Pixel resolution	0,01 mm
■ Measurement capability for	+/- 0,1 mm tolerance

all technical values are tentative up until a final technical alignment

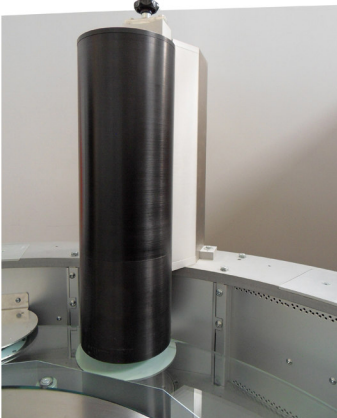
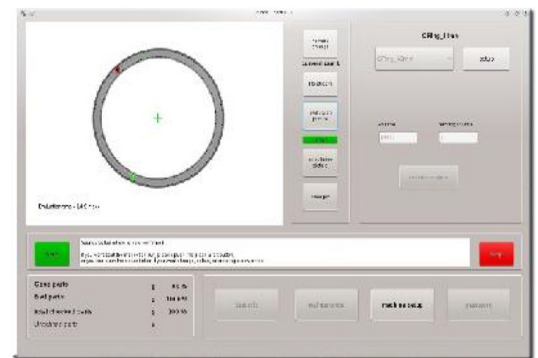
short info KTline



KT Vision Systems aim to be as simple as possible needed with a modular design. This allows the user to concentrate on the product quality and to inspect small lots without efforts as well.

KT Vision Systems are unique in the picture analysis through consequent use of innovative sensor technologies. Combined with the very special software, this delivers highest quality and efficiency in the vision inspection.

KT Software, intelligent and easy to use! With KT auto-setup, the vision system applies a self-test on the master samples or even the first teach in parts. Generally, the operator sets only the severity and the minimum error limit. Lighting, flash, the test zones and the remaining parameters for the surface analysis are automatically determined and set optimally. The KT auto-setup works for standardized components and defects. For non-standard parts / seals, the expert mode is suitable to create your own receipts.

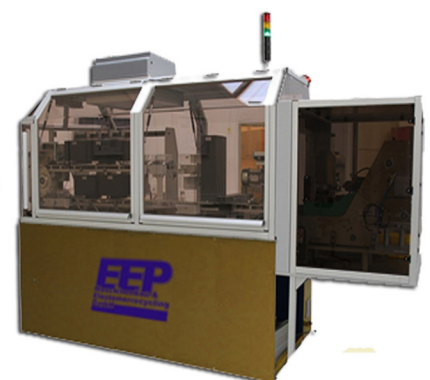


KT Sensors, the eyes of the inspection machine

Innovations in detail and highest optical precision generate detailed pictures of the parts. Multi-level lighting systems offer the highest possible contrast and thus a safe and reproducible surface analysis. All sensors are equipped with their own computing power and work autonomously. Only the instructions exchange via a network to the control computer. The pattern recognition collaborates together with an expert system generating the final decision if the detect area does not represent a defect or if the part has to be blown out as scrap. This very intelligent decision procedure reduces significantly the so-called pseudo scrap and makes the test system more efficient than most other systems on the market.

KT optimized mechanics

A stable engineering for optimized flow of parts form the backbone for sensor and actuator systems. Easy access allows rapid conversion to other parts and quick cleaning. The modular design allows for easy configuration and upgrades.





www.tuv.com
ID 9108611555

+49 2264-20098-0

+49 170-3263042

@ maschinenbau@eep-maschinenbau.de