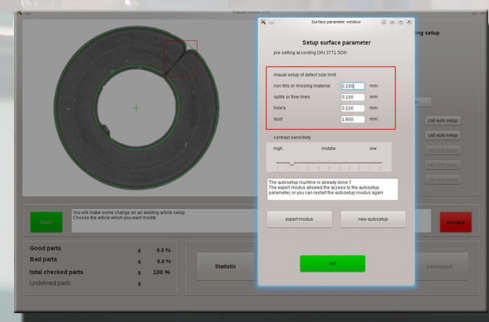
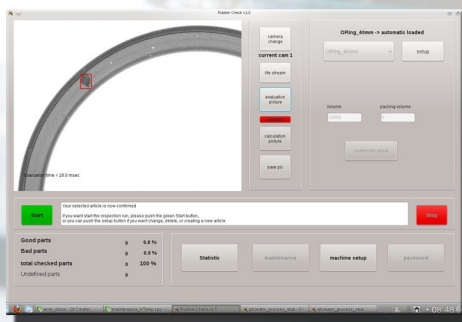
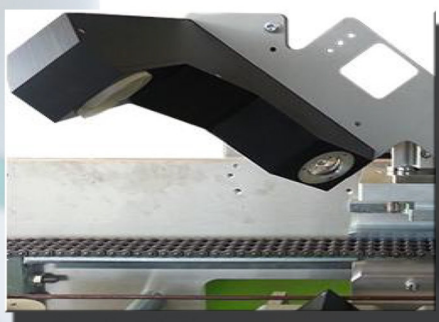


KTstep



EEP
Maschinenbau &
Elastomerrecycling
GmbH



KT Vision Systems

www.eep-maschinenbau.de

KTstep

Product Information

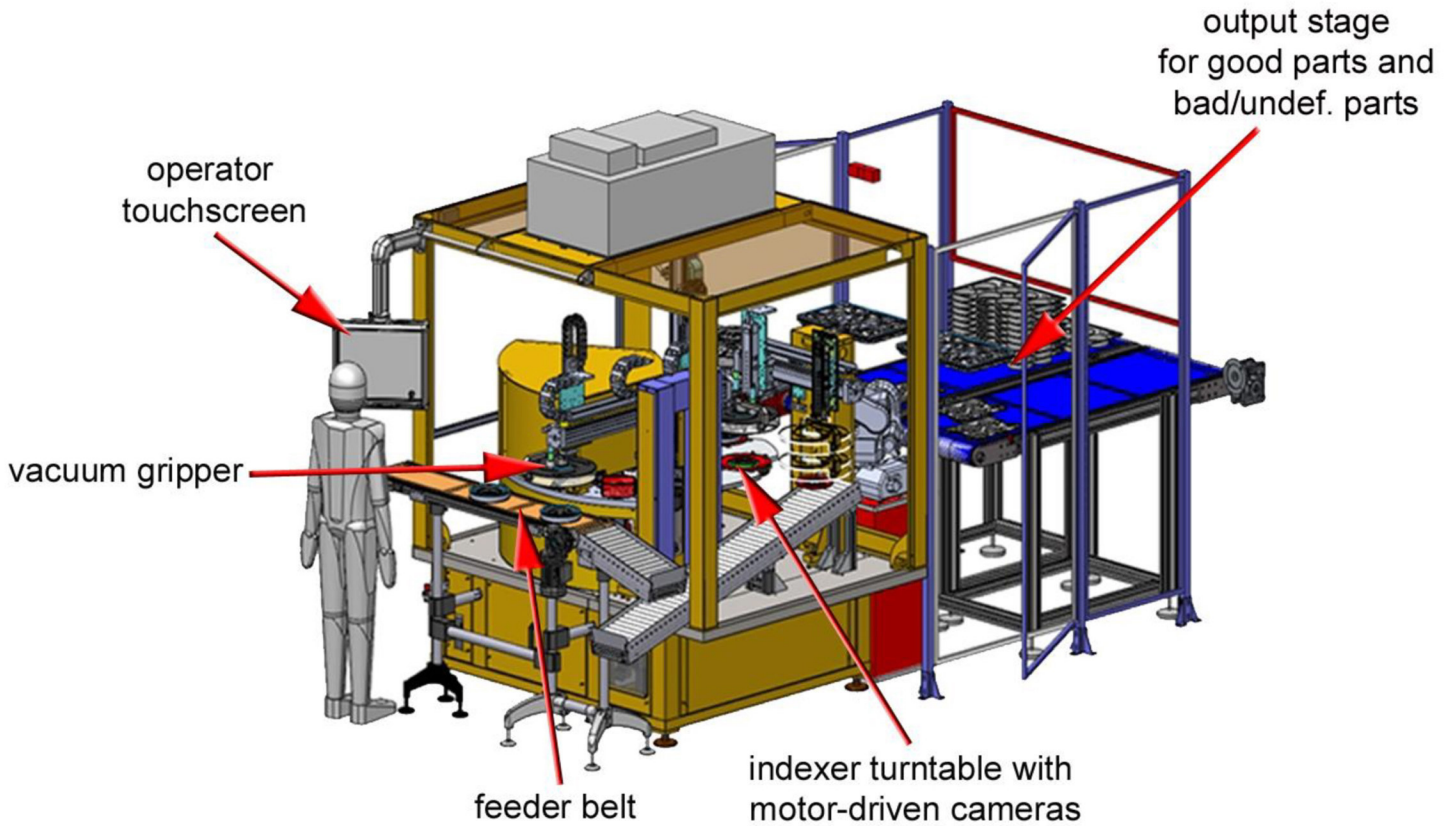
High performance 2D/3D testing system for oil seals and other complex rotary seals and parts, either made out of metal, plastic, rubber or a combination of these with an external diameter of up to 200 mm OD

This KTstep inspection system provides specific surface inspection placing the parts on a rotating disc with a centering groove. the parts themselves are rotating while being inspected. This system has the advantage of high flexibility and quick set up changes.

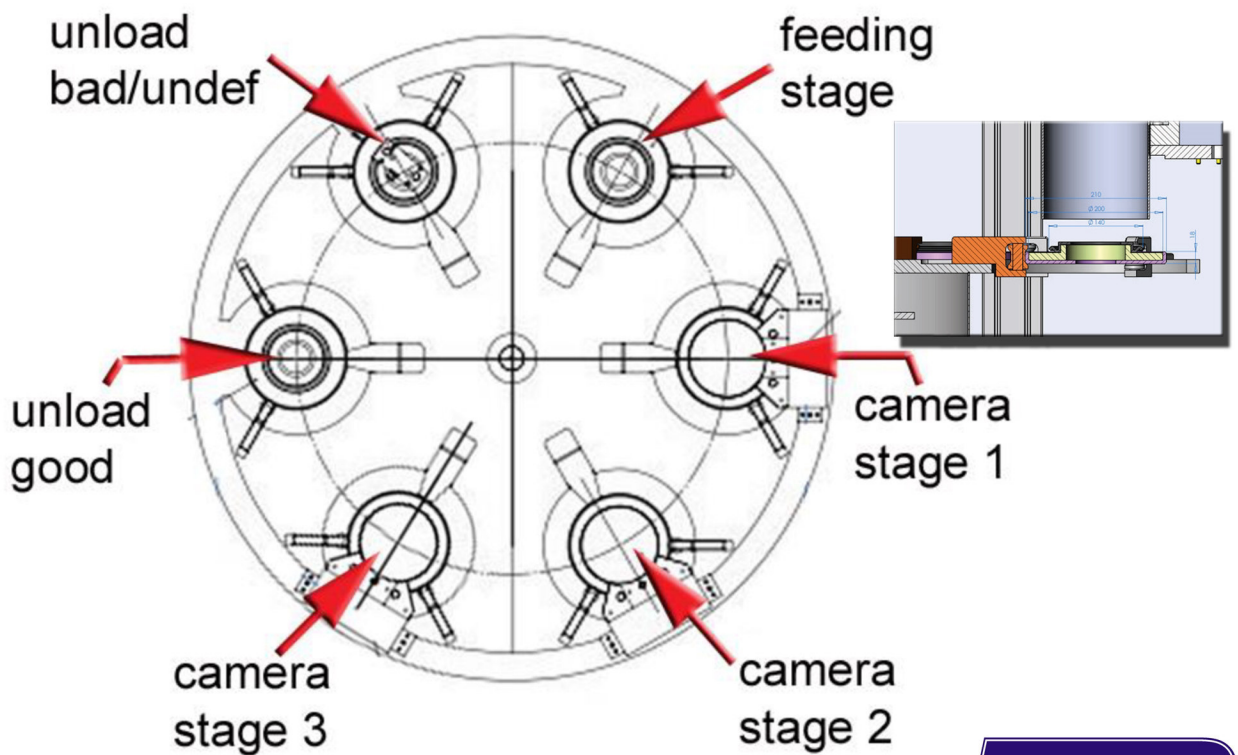
This system has a solid and stable index table as basic machine with various extension and connection options, including the possibility of integration into existing production cells (de-molding, trimming) as well as packaging.



The KTstep inspection system is based on an indexer turntable with 6 stages. Each 3 stages can be equipped with camera modules, the other 3 stages serve loading and unloading.

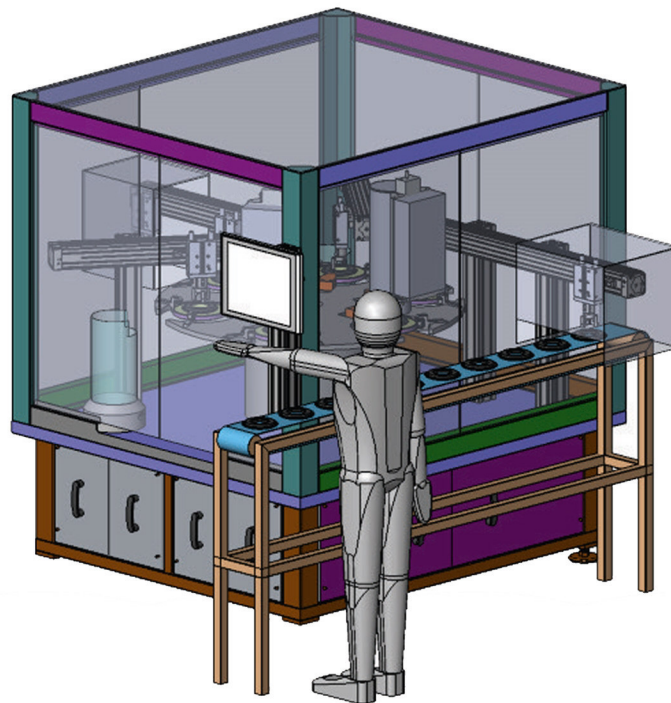


indexer turntable with
motor-driven cameras



■ Features

- Testing Area up to 200 mm
- Solid and stable index table as basic machine with various extension and connection possibilities including the integration in existing production cells (de-molding, trimming) as well as packaging.
- HMI with touch screen
- Automatic Set up
- Simple choice of severity



KT Optimized Mechanics

A stable, service-friendly engineering and optimized for elastomers flow of parts form the backbone for sensor and actuator systems. Easy access allows rapid conversion to other parts and a quick cleaning. The round design represents not only a visual highlight; it is also designed to optimally place.

Sensors

KT Sensors are solid-camera-systems, equipped with their own computing power and work autonomously. Only the results and the test instructions are exchanged via a network to the control computer.

Technical data

■ Verifiable part sizes:	from 50 mm to 200 mm
■ Min. surface defects:	0,1 x 0,1 x 0,08 mm (length x width x depth)
■ Min. grey scale contrast	25 grey scales
■ Cycle time	2 – 10 sec / part depending on part size

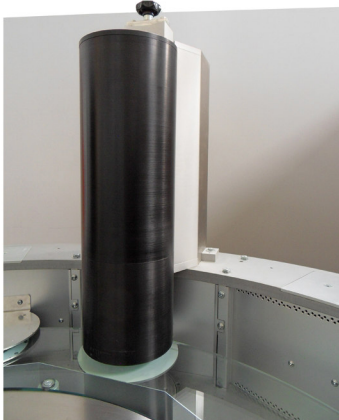
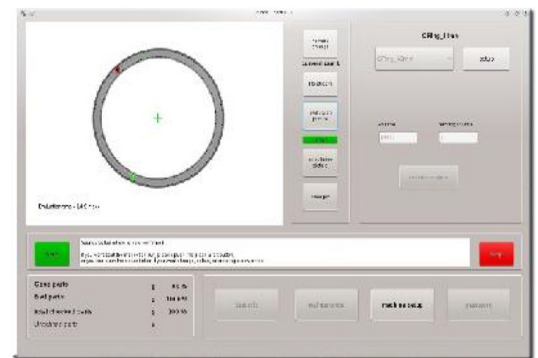
short info KTstep



KT Vision Systems aim to be as simple as possible needed with a modular design. This allows the user to concentrate on the product quality and to inspect small lots without efforts as well.

KT Vision Systems are unique in the picture analysis through consequent use of innovative sensor technologies. Combined with the very special software, this delivers highest quality and efficiency in the vision inspection.

KT Software, intelligent and easy to use! With KT auto-setup, the vision system applies a self-test on the master samples or even the first teach in parts. Generally, the operator sets only the severity and the minimum error limit. Lighting, flash, the test zones and the remaining parameters for the surface analysis are automatically determined and set optimally. The KT auto-setup works for standardized components and defects. For non-standard parts / seals, the expert mode is suitable to create your own receipts.



KT Sensors, the eyes of the inspection machine

Innovations in detail and highest optical precision generate detailed pictures of the parts. Multi-level lighting systems offer the highest possible contrast and thus a safe and reproducible surface analysis. All sensors are equipped with their own computing power and work autonomously. Only the instructions exchange via a network to the control computer. The pattern recognition collaborates together with an expert system generating the final decision if the detect area does not represent a defect or if the part has to be blown out as scrap. This very intelligent decision procedure reduces significantly the so-called pseudo scrap and makes the test system more efficient than most other systems on the market.

KT optimized mechanics

A stable engineering for optimized flow of parts form the backbone for sensor and actuator systems. Easy access allows rapid conversion to other parts and quick cleaning. The modular design allows for easy configuration and upgrades.





www.tuv.com
ID 9108611555

+49 2264-20098-0

+49 170-3263042

@ maschinenbau@eep-maschinenbau.de